

natus[®]
newborn care



RETCAM 3[™]
PEDIATRIC EYE IMAGING

BECAUSE EVERY NEWBORN DESERVES CLEAR VISION.

www.natus.com

WHY IS THE RETCAM SO IMPORTANT?

Historically, **RETCAM** images of pediatric eyes have been analyzed by physicians to assist them in the evaluation of pediatric ocular diseases which have preserved the vision in thousands of infants.

RETCAM IN THE NICU

Imaging preemies for physician evaluation of pediatric ocular diseases

RETCAM IN NEWBORN NURSERY

Imaging full-term babies for physician evaluation of pediatric ocular diseases and establish a baseline for future eye health

RETCAM IN THE OR

Imaging full-term babies for physician evaluation Imaging of children who undergo examinations under anesthesia

RETCAM IN THE CLINIC

Imaging provides information that can be shared with parents to help them better understand the physician evaluation



RetCam₃



Image of ROP



Image of ROP with FA

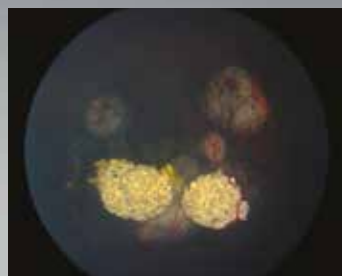


Image of Eye Tumor
(e.g. Retinoblastoma)



Image of Non-accidental
Head Trauma

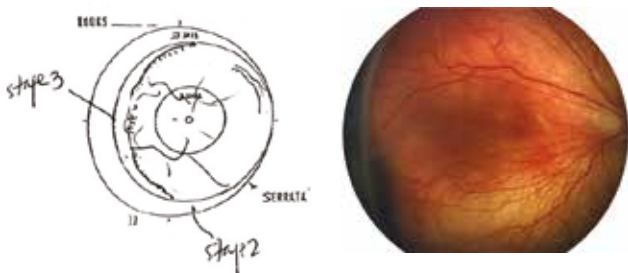


83% OF KNOWLEDGE COMES VIA SIGHT¹

40 MILLION EYE IMAGES CAPTURED BY RETCAM SYSTEMS

HAND DRAWING VS. RETCAM IMAGE: IMAGE OF RETINOPATHY OF PREMATURITY

- Significantly greater field of view with images captured by the RETCAM compared to binocular indirect ophthalmoscopy
- Effective for consultations/second opinions
- Accuracy in precise location and structure of details
- Avoids reliance on "human" memory



HOW THE RETCAM 3 BENEFITS YOU

- Delivers objective, interpretable detail
- Allows image comparison over time
- Enables remote consultations and facilitates a convenient method for second opinions
- Serves as an effective educational tool for staff and parents which may help with compliance
- Provides reliable, defensible medico-legal documentation
- RETCAM 3 can be used as a standalone system or you can set it up as a network with RETCAM Review Software.



Brilliant full screen images can be viewed along with thumbnails that are captured during an exam

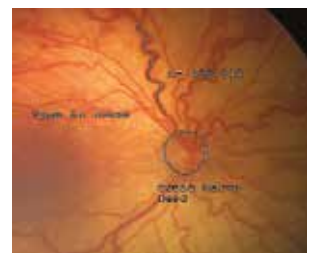


Image annotation allows addition of notes, circles and lines on captured images for future reference

"The introduction and widespread adoption of the digital RETCAM technology for pediatric ocular imaging has allowed for objective determination of disease state and progression while permitting immediate collaborative consultation amongst quaternary specialists, raising the standards of the entire field."

Darius M. Moshfeghi, MD



Convenient viewing of key patient information is available at-a-glance including image thumbnails

¹ Data on file

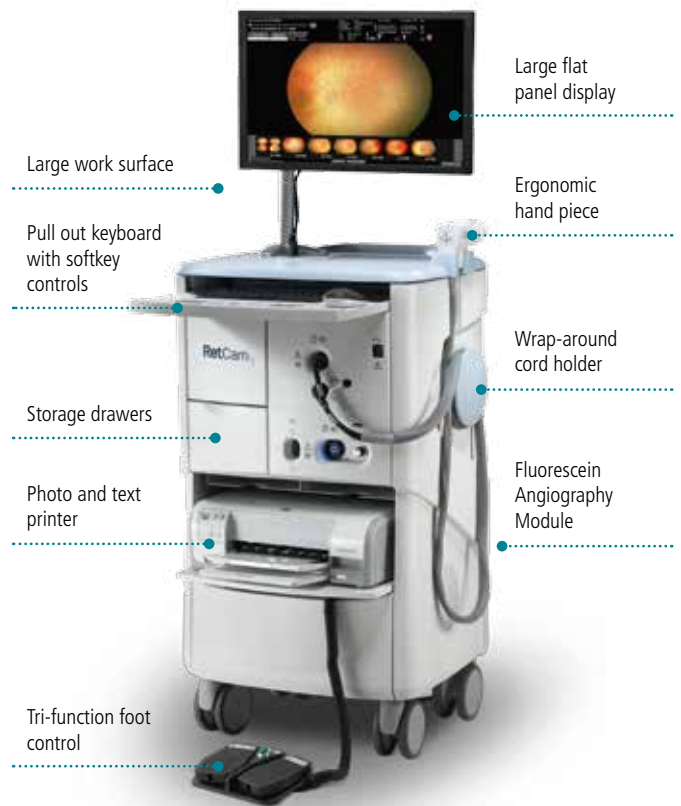
RETCAM 3™

PEDIATRIC EYE IMAGING

INNOVATION WITH PROVEN PERFORMANCE

RETCAM is a fully integrated wide-field digital imaging system for the hospital and clinic. This state-of-the-art system provides ophthalmic visualization and photo documentation with features that help assure the capture of pediatric ocular images

- Five interchangeable lenses
- Brilliant color images can be viewed in full-screen mode for maximum visualization of detail
- Captures full-resolution videos up to 2-minutes
- At-a-glance listing of patients with advanced patient search capability. Search by patient, doctor, pathology, exam date and more
- Captures structural elements to facilitate physician review and follow-up
- With the addition of RCRS, physicians can view, import, upload or annotate patient data and images from anywhere at anytime



TECHNICAL SPECIFICATIONS FOR RETCAM 3

COMPUTER

Operating System	Windows 7 - Embedded
Processor	Pentium Dual Core 2.4GHz
Connectivity	LAN/Multi USB
Hard Drive	1 TB
System Memory	4 GB

PATIENT FILE IMPORT / EXPORT

Windows File Transfer
Clarity format and/or Ophthalmic DICOM

IMAGING CART

Footprint	21" x 23"
Work Surface Height	41"
Work Surface Area	230 square inches
Display Monitor	23"
Casters	Durable; 4 locking
Cord Wraps	Handpiece cabling & Power Cord
Batteries	15 minute back-up during imaging
Printer	Combination Text and Photo Printer
Accessory Storage Drawers	
Fluorescein Angiography Capability	