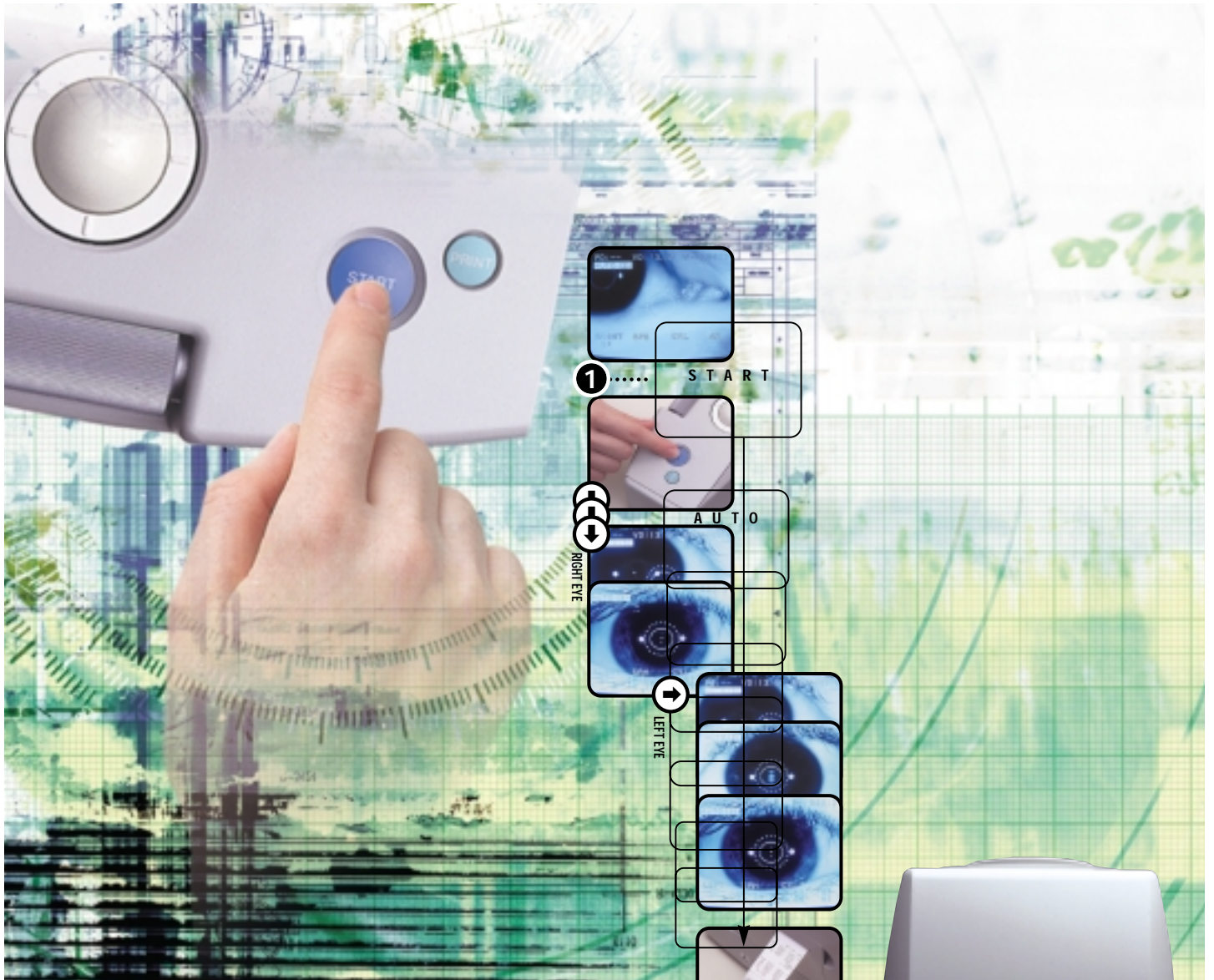


Canon

R-F10m

Full Auto Ref



JUST PRESS START... PROCEDURE COMPLETED!

All operations in just one step, from auto-alignment to measurement to printout. That's the unmatched advantage of the Canon R-F10m Full Auto Ref. With a press of the Start button, the R-F10m sweeps through its exceptionally wide auto-alignment area, measures the right eye, and then automatically moves on to the left eye. Upon completing left eye measurement, your printout is ready in an instant. This streamlined, one-touch process is the latest breakthrough from Canon, a leader in optometric innovation. It's at the core of a total package that offers faster exam times, greater ease of use, and greater reliability. Vision care has never been easier—or better—than this.



B E Y O N D A U T O - A L I G N M E N T

A Full Array of Features to Enhance Full Auto Operation



First-class eye exams

The R-F10m has one of the widest measurement ranges available, from -30 to +22 diopters. And to ensure high precision, it features a small pupil size requirement and an automatic fogging system with color picture target. Sphere, cylinder, axis, and pupil distance measurements are provided.

Ergonomic controls

The trackball-and-roller combination lets you perform initial alignment with your fingertips alone, and offers comfort during extended use. Control keys for major functions (such as vertex distance switching) are grouped together to facilitate operation from a sitting or standing position.



Intelligently designed

A motorized chin rest simplifies the process of height adjustment prior to an exam. What's more, the R-F10m gives unrestricted access to the eye, making it easier to lift the examinee's eyelid to get an optimal reading. And because only the top part moves during measurement, examinees can rest their hands or eyeglasses on either side of the unit. Compact size is another benefit.

Quick, clear printouts

Thanks to the inclusion of Canon's renowned printing technology, you get clearly legible printouts right away.

Sales area is limited. For inquiries on availability, please contact an authorized Canon dealer.

Specifications

MEASURABLE RANGE

Sphere (SPH)	-30 to +22 D <i>when VD=12mm</i> (Increments: 0.12D and 0.25D)
Cylinder (CYL)	0 to ±10 D (Increments: 0.12D and 0.25D)
Axis (AX)	1° to 180°
Pupil distance (PD)	Max. 85 mm (Increments: 1mm)
Vertex distance (VD)	0/12/13.5 mm
Cylinder form	-, +, +/-
Minimum pupil size	ø 2.5mm

MEMORY

Measurement values	10 for each eye
Standard value	1 for each eye
Pupil distance	1

Printing

Thermal line printer
Prints measurements, date, time, serial number, and eye diagram.

Data output

RS232C
The instrument to be connected must comply with the IEC601-1 standard.

Power-saving system

Monitor, lamp, and motor go into Sleep mode when operation is discontinued for approx. 5 minutes.
100 - 240V AC, 50/60Hz, 0.8 - 0.4A
Approx. 280 x 520 x 470 mm
Approx. 21kg

Power supply

Dimensions (W x L x H)
Weight

Components

Main unit	1
Power supply cable	1
Printing paper	2 rolls
Chin rest paper	100 sheets
Blower brush	1
Dust cover	1

Optional accessories

Printing paper, chin rest paper, motorized table, printer cable

Specifications are subject to change without notice.

Canon

CANON INC.

HEADQUARTERS

30-2, Shimomaruko 3-chome, Ohta-ku, Tokyo 146-8501, Japan

MEDICAL EQUIPMENT GROUP

20-2, Kiyohara-Kogyo-Danchi,
Utsunomiya, Tochigi 321-3292, Japan
Telephone: (81) 28-667-8693 Fax: (81) 28-667-8699

CANON U.S.A., INC. Los Angeles Office

15955 Alton Parkway, Irvine, CA 92618-3616, U.S.A.
Telephone: (1) 949-753-4162 Fax: (1) 949-753-4280

CANON EUROPA N.V. Medical Products Division

Bovenkerkerweg 59-61, 1185 XB Amstelveen, The Netherlands
Telephone: (31) 20-545-8926 Fax: (31) 20-545-8220

CANON SINGAPORE PTE. LTD. Medical Equipment Dept.

1 HarbourFront Avenue #04-01 Keppel Bay Tower, Singapore 098632
Telephone: (65) 276-6038 Fax: (65) 271-4226